



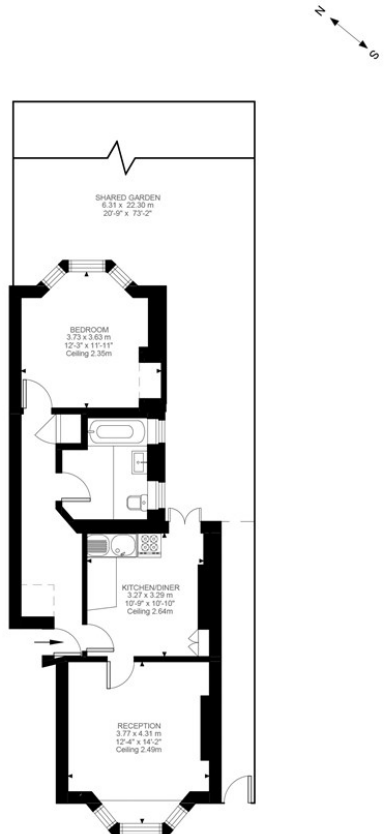
PER CALENDAR MONTH

£2,250 Per Calendar Month

Marsden Road

, SE15 4EE

**GARETH
JAMES**



Raised Ground Floor
585 ft²

Marsden Road, SE15
Approximate Gross Internal Area
54.36 SQ.M / 585 SQ.FT

KEY: CH = Ceiling Height
[Restricted Head Height]

Illustration for identification purposes only. Not to scale.
Floor Plan Drawn According To RIGS Guidelines.



Energy Efficiency Rating

	Current	Potential
Very energy efficient - lower running costs		
(92 plus) A		
(81-91) B		
(69-80) C		
(55-68) D	62	75
(39-54) E		
(21-38) F		
(1-20) G		
Not energy efficient - higher running costs		
England & Wales	EU Directive 2002/91/EC	



Agents Note: Whilst every care has been taken to prepare these particulars, they are for guidance purposes only. All measurements are approximate and are for general guidance purposes only and whilst every care has been taken to ensure their accuracy, they should not be relied upon and potential buyers/tenants are advised to recheck the measurements

**GARETH
JAMES**

OFFICE ADDRESS
129 Bellenden Road
London
SE15 4QY

OFFICE DETAILS
02077324330
lettings@garethjames.com
<https://www.garethjames.com/>